



Pumps & Pumps

V-Series

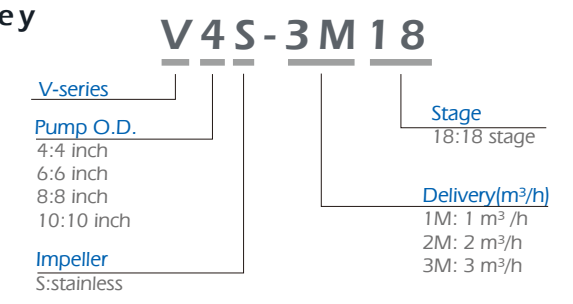
Index / Stainless Steel Submersible Pumps VS-Series

Index / Type Key—02

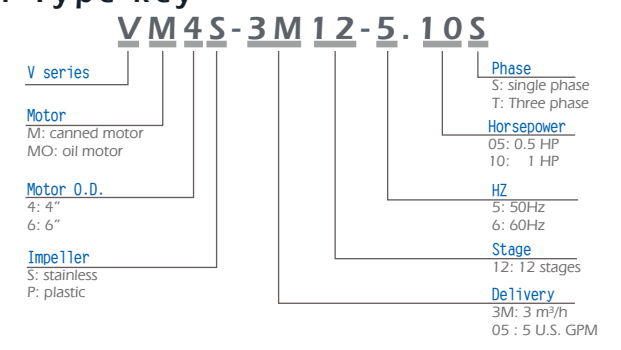
4" SST Submersible Pump	6" SST Submersible pump	8" SST Submersible pump
General Data—03	General Data—11	General Data—17
V4S-1M—05	V6S-17M—13	V8S-77M—19
V4S-2M—06	V6S-30M—14	V8S-95M—21
V4S-3M—07	V6S-46M—15	
V4S-5M—08	V6S-60M—16	10" SST Submersible pump
V4S-8M—09		General Data—23
V4S-14M—10		V10S-125M—25
		V10S-160M—27
		V10S-215M—29

Type Key

Pump Type key



Pump & Motor Type key



EVAK V-Series 4" Stainless Steel Submersible Pumps



V4S

V4S

Evak's VS 4" range of submersible pumps are made of corrosion and abrasion resistant stainless steel and have been developed in accordance with state-of-the-art technology. The VS 4" Pumps are manufactured to the highest standards for energy efficiency, reliable performance, rugged construction & long service life.

Pumped Liquids:
Clean, non-corrosive and non-abrasive liquids

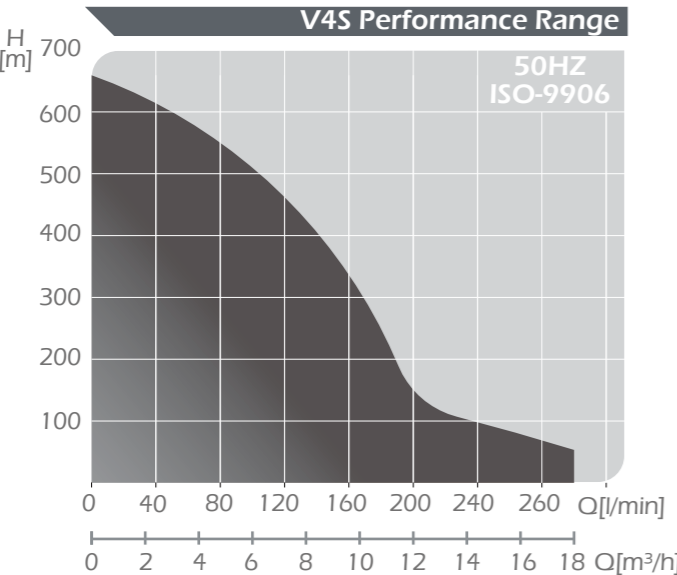
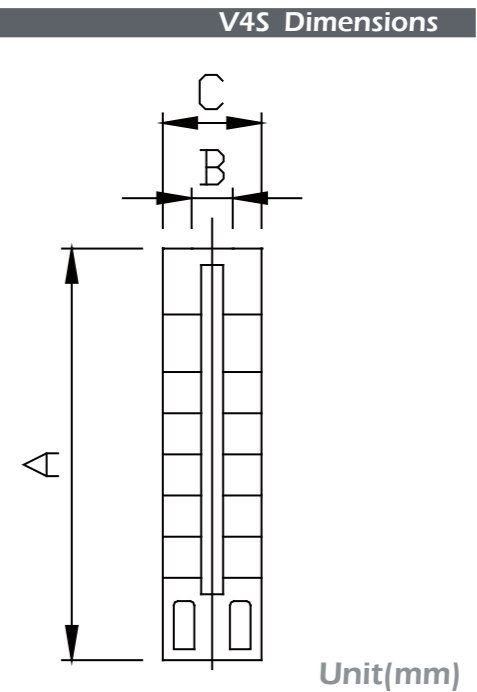
Operating Conditions:
Max. liquid temperature: 60 °C
Sand content: Max. 50 g/m³

Features

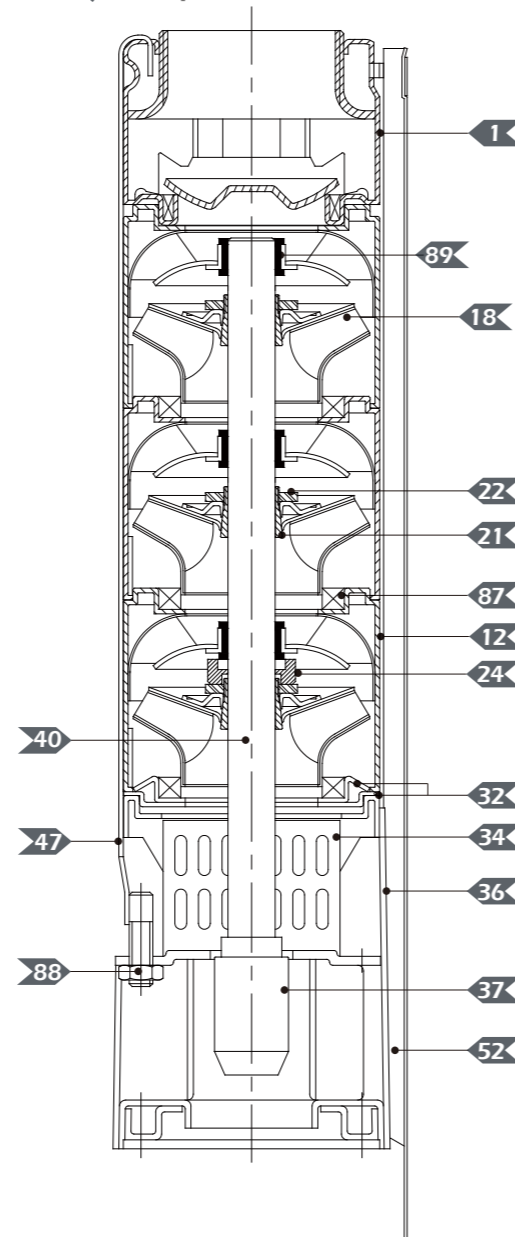
- > All stainless steel design
- > Built-in Jam-free check valve
- > Smooth Safety hook
- > NEMA Standards Mounting Specification
- > High quality shaft bearing for low friction
- > High wear resistance SST Impeller
- > Diffuser ensuring optimal performance
- > SST Strainer prevents the Entry of Sand & other extraneous material

Applications

- > Potable water supply from deep wells
- > Agricultural-Irrigation, livestock watering, etc.
- > Municipal and Industrial
- > Pressure boosting & Fountains, etc.



Example V4S-14M



V4S-1M Dimensions and Weight

Type	A	B	C	Net Weight(kg)
V4S-1M09	356	Rp 1 1/4"	98	2.9
V4S-1M14	461		98	3.7
V4S-1M18	545		98	4.4
V4S-1M21	608		98	5.0
V4S-1M28	755		98	6.2
V4S-1M36	946		98	9.9
V4S-1M42	1072		98	11.3

V4S-2M Dimensions and Weight

Type	A	B	C	Net Weight(kg)
V4S-2M09	356	Rp 1 1/4"	98	3.0
V4S-2M13	440		98	3.8
V4S-2M18	545		98	4.7
V4S-2M23	650		98	5.7
V4S-2M28	755		98	6.6
V4S-2M33	883		98	9.7
V4S-2M40	1030		98	11.5
V4S-2M48	1198		98	13.5

V4S-3M Dimensions and Weight

Type	A	B	C	Net Weight(kg)
V4S-3M06	293	Rp 1 1/4"	98	2.4
V4S-3M09	356		98	3.0
V4S-3M12	419		98	3.6
V4S-3M15	482		98	4.2
V4S-3M18	545		98	4.7
V4S-3M22	629		98	5.5
V4S-3M25	692		98	6.1
V4S-3M29	776		98	6.8
V4S-3M33	883		98	9.7
V4S-3M39	1109		98	11.2
V4S-3M45	1135		98	12.7
V4S-3M52	1282		98	14.5

V4S-5M Dimensions and Weight

Type	A	B	C	Net Weight(kg)
V4S-5M04	251	Rp 1 1/2"	98	2.0
V4S-5M06	293		98	2.4
V4S-5M08	335		98	2.8
V4S-5M12	419		98	3.6
V4S-5M17	524		98	4.5
V4S-5M21	608		98	5.3
V4S-5M25	692		98	6.0
V4S-5M33	868		98	9.6
V4S-5M38	973		98	10.9
V4S-5M44	1099		98	12.4

V4S-8M Dimensions and Weight

Type	A	B	C	Net Weight(kg)
V4S-8M05	412	Rp 2"	98	4.3
V4S-8M07	496		98	5.3
V4S-8M10	622		98	6.8
V4S-8M12	706		98	7.8
V4S-8M15	832		98	9.3
V4S-8M18	958		98	10.8
V4S-8M21	1084		98	12.3
V4S-8M25	1252		98	14.3
V4S-8M30	1462		98	16.8
V4S-8M37	1753		98	20.3
V4S-8M50	2315	98	24.7	

V4S-14M Dimensions and Weight

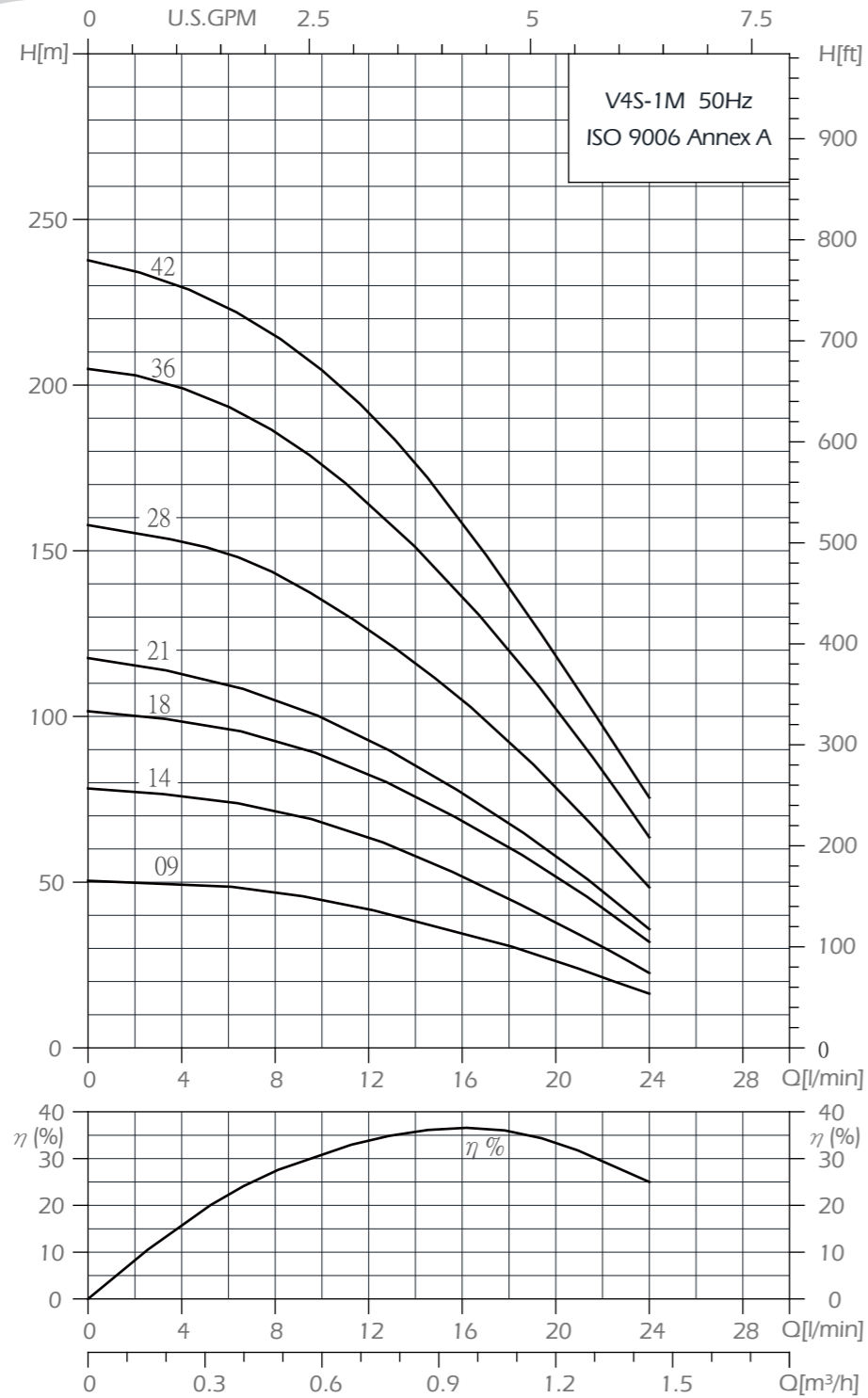
Type	A	B	C	Net Weight(kg)
V4S-14M05	505	Rp 2"	98	5.0
V4S-14M07	635		98	6.3
V4S-14M10	830		98	8.2
V4S-14M13	1025		98	10.2
V4S-14M18	1350		98	13.4
V4S-14M25	1805		98	17.8

C = Maximum diameter of pump inclusive of cable guard and motor

Parts and Material List

No	Part	Material	Standard
1	Discharge	Stainless Steel	304
12	Diffuser	Stainless Steel	304
18	Impeller	Stainless Steel	304
21	Split Cone	Stainless Steel	304
22	Split Cone Nut	Stainless Steel	304
24	Stop Ring	Carbon/Graphite/PTFE	
32	Neck Ring Retainer	Stainless Steel	304
34	Strainer	Stainless Steel	304
36	Suction Interconnector	Stainless Steel	304
40	Pump Shaft	Stainless Steel	431
37	Coupling	Stainless Steel	304
47	Strap	Stainless Steel	304
52	Cable Guard	Stainless Steel	304
87	Neck Ring	SUS304+NBR	
88	Nut	Stainless Steel	304
89	Bearing	NBR	

V4S-1M Performance Curves & Selection Chart

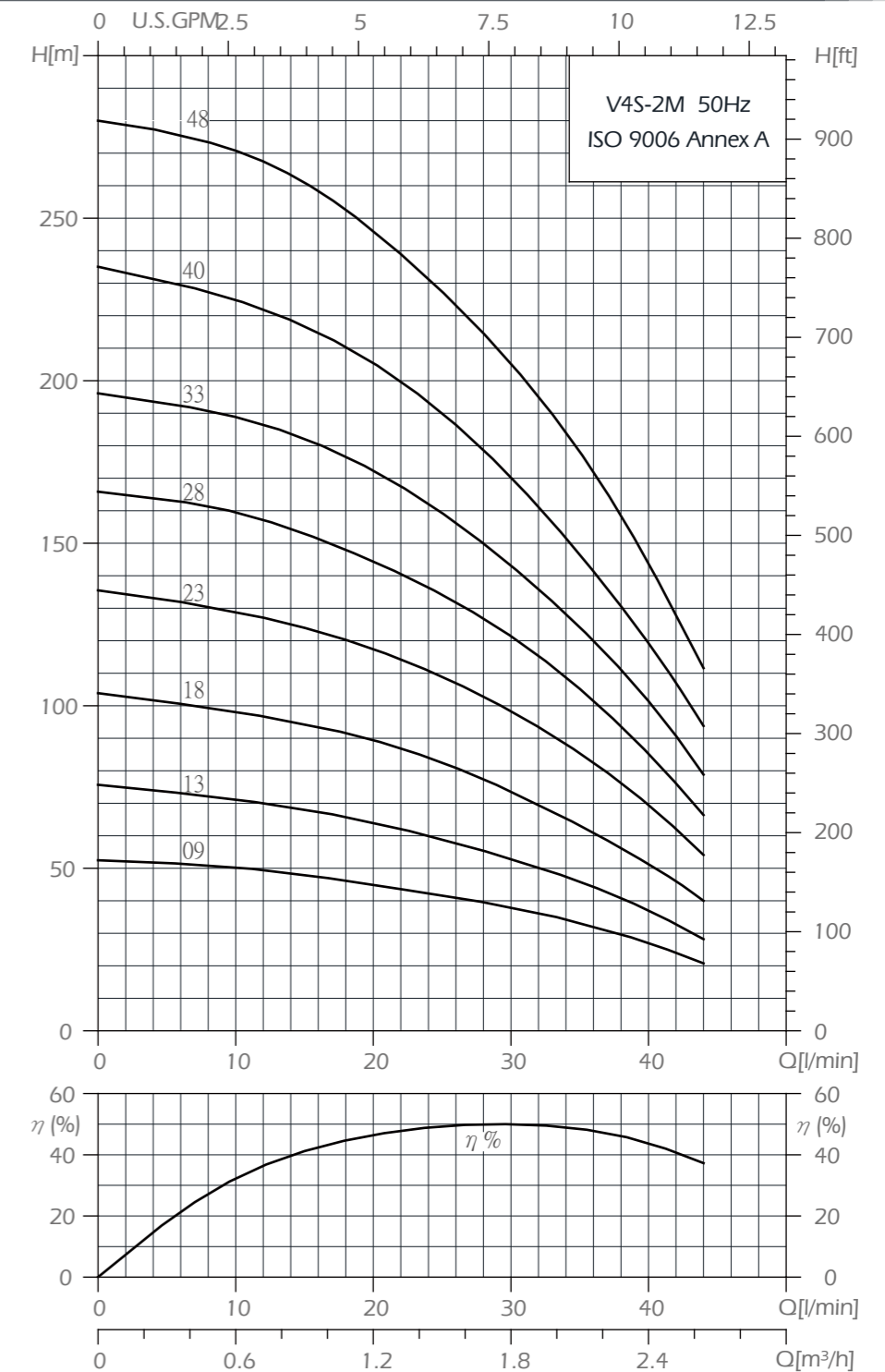


V4S-1M Selection Chart

Type	Stages	Output		L/MIN	H: TOTAL HEAD IN METERS														Weight
		HP	KW		0	0.3	0.6	0.9	1.2	1.5	1.8	2.1	2.4	2.7	3.0	3.6	4.2	Kg	
V4S-1M09	9	0.5	0.37	M ³ /H	52	48	45	36	27	14									2.9
V4S-1M14	14	0.5	0.37		79	76	68	56	38	21									3.7
V4S-1M18	18	0.75	0.55		102	96	88	72	52	27									4.4
V4S-1M21	21	0.75	0.55		118	112	100	81	58	30									5.0
V4S-1M28	28	1.0	0.75		158	153	138	111	78	42									6.2
V4S-1M36	36	1.5	1.1		205	195	175	134	103	54									9.9
V4S-1M42	42	1.5	1.1		238	235	203	167	118	67									11.3

All technical information is subject to change without notice.

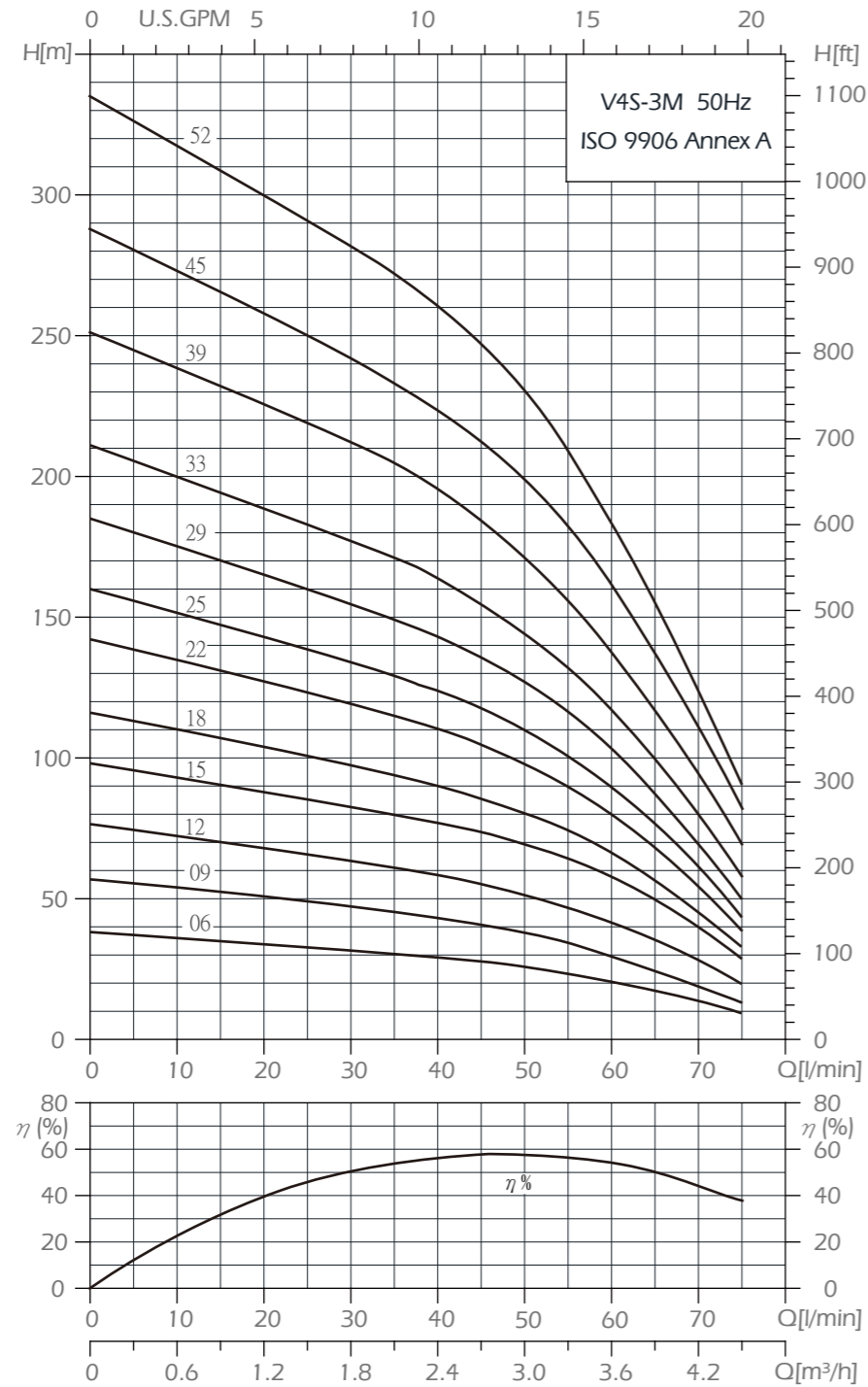
V4S-2M Performance Curves & Selection Chart



V4S-2M Selection Chart

Type	Stages	Output		L/MIN	H: TOTAL HEAD IN METERS														Weight
		HP	KW		0	0.3	0.6	0.9	1.2	1.5	1.8	2.1	2.4	2.7	3.0	3.6	4.2	Kg	
V4S-2M09	9	0.5	0.37	M ³ /H	53			48	45	42	38	33	26						3.0
V4S-2M13	13	0.75	0.55		77			68	64	58	54	46	38						3.8
V4S-2M18	18	1.0	0.75		104			94	89	83	74	64	51						4.7
V4S-2M23	23	1.5	1.1		136			124	118	108	98	84	69						5.7
V4S-2M28	28	2.0	1.5		166			154	145	134	122	105	86						6.6
V4S-2M33	33	2.0	1.5		195			183	173	159	143	124	102						9.7
V4S-2M40	40	3.0	2.2		235			218	205	190	170	147	119						11.5
V4S-2M48	48	3.0	2.2		280			261	246	228	204	178	143						13.5

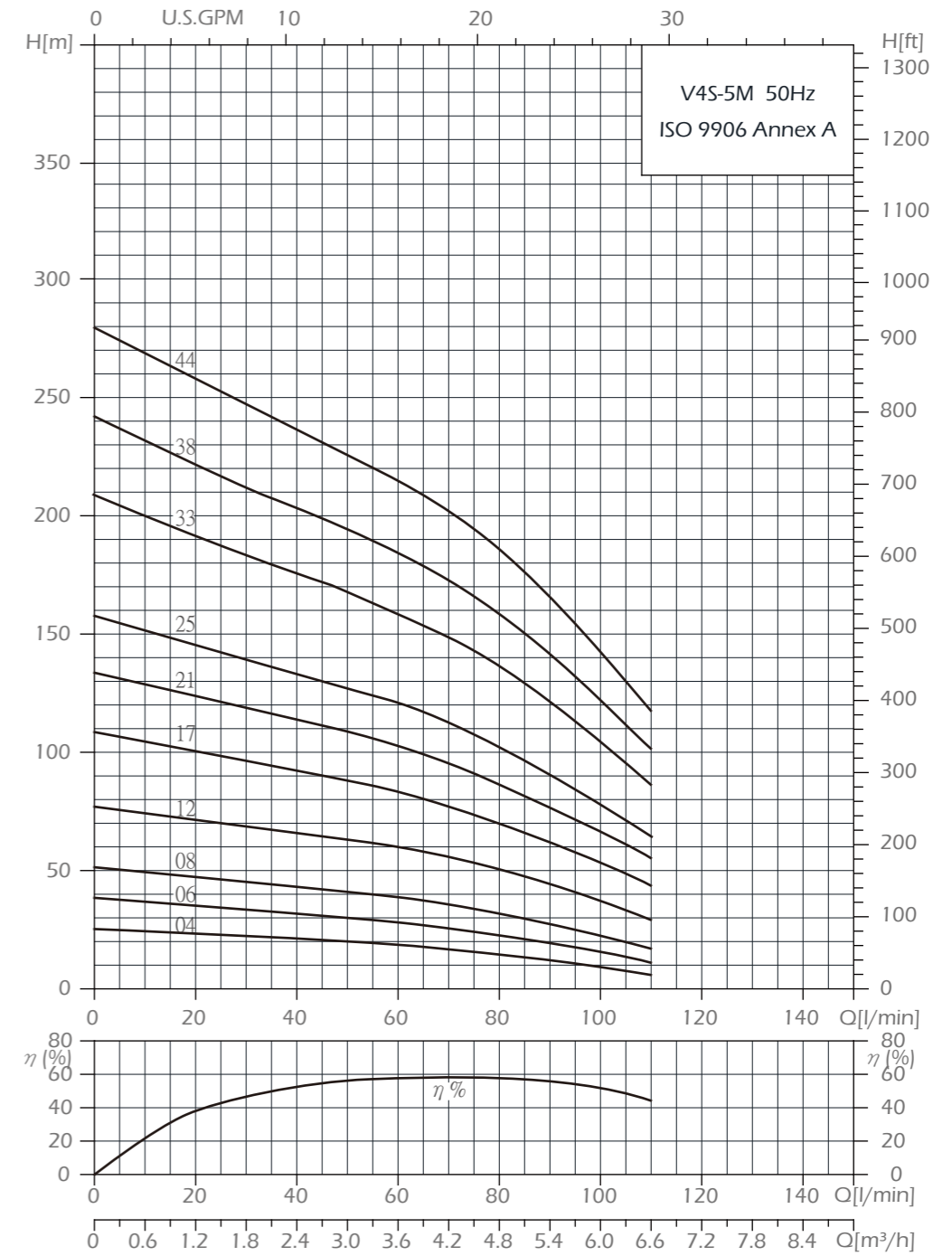
V4S-3M Performance Curves & Selection Chart



V4S-3M Selection Chart

Type	Stages	Output		L/MIN	Q [l/min]														Weight Kg
		HP	KW		0	5	10	15	20	25	30	35	40	45	50	60	70		
V4S-3M06	6	0.5	0.37	H: TOTAL HEAD IN METERS Discharge : Rp 1-1/4"	38					33	32	31	30	28	26	22	14	2.4	
V4S-3M09	9	0.75	0.55		57					49	47	46	44	41	38	30	19	3.0	
V4S-3M12	12	1.0	0.75		77					66	64	62	58	56	52	43	28	3.6	
V4S-3M15	15	1.5	1.1		97					85	83	80	77	74	69	57	40	4.2	
V4S-3M18	18	1.5	1.1		116					101	97	94	90	85	80	67	45	4.7	
V4S-3M22	22	2.0	1.5		143					127	120	115	110	105	97	80	54	5.5	
V4S-3M25	25	2.0	1.5		160					139	134	128	124	117	110	90	60	6.1	
V4S-3M29	29	3.0	2.2		185					160	155	149	143	136	127	103	70	6.8	
V4S-3M33	33	3.0	2.2		211					183	177	172	164	155	145	118	80	9.7	
V4S-3M39	39	4.0	3.0		250					219	213	204	195	185	172	138	94	11.2	
V4S-3M45	45	4.0	3.0	288					250	243	233	224	213	199	162	110	12.7		
V4S-3M52	52	5.5	4.0	334					291	282	272	261	247	230	184	123	14.5		

V4S-5M Performance Curves & Selection Chart

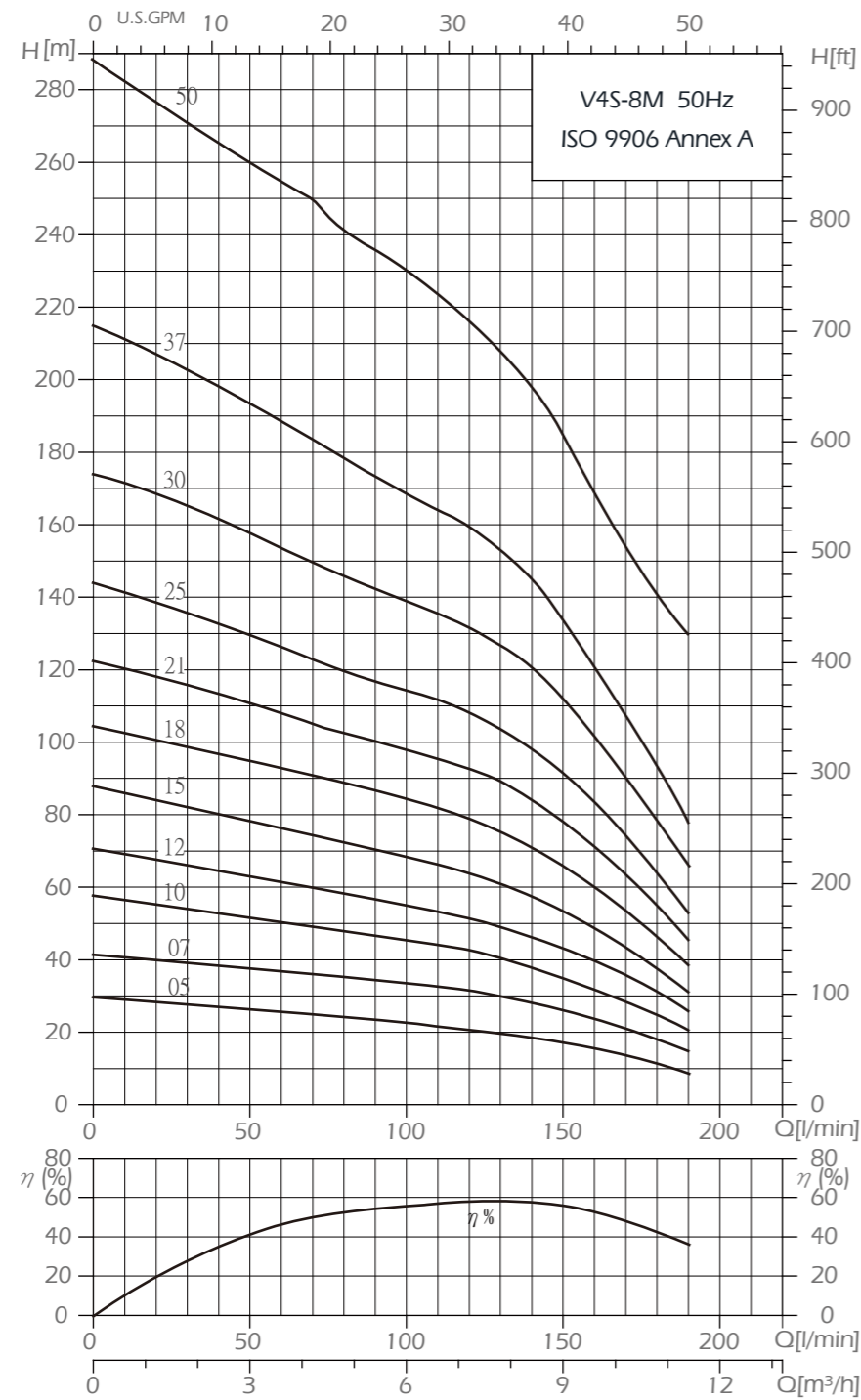


V4S-5M Selection Chart

Type	Stages	Output		L/MIN	Q [l/min]														Weight Kg	
		HP	KW		0	15	20	25	30	35	40	45	50	60	70	80	90	100		
V4S-5M04	4	0.5	0.37	H: TOTAL HEAD IN METERS Discharge : Rp 1-1/2"	25					23	22	21	20.5	20	19	17	15	13	10	2.0
V4S-5M06	6	0.75	0.55		38					34	33	32	31	30	28	26	24	20	16	2.4
V4S-5M08	8	1.0	0.75		52					45	44	43	42	41	39	36	33	28	23	2.8
V4S-5M12	12	1.5	1.1		77					68	67	66	64	63	60	56	50	44	37	3.6
V4S-5M17	17	2.0	1.5		108					96	94	93	90	88	84	77	70	63	54	4.5
V4S-5M21	21	3.0	2.2		134					118	115	113	111	108	103	96	87	77	67	5.3
V4S-5M25	25	3.0	2.2		157					138	136	133	129	127	121	113	103	90	78	6.0
V4S-5M33	33	4.0	3.0		209					184	180	176	172	168	159	149	137	123	105	9.6
V4S-5M38	38	5.5	4.0		242					212	208	204	199	194	185	172	158	142	123	10.9
V4S-5M44	44	5.5	4.0		279					247	242	237	231	226	215	202	187	166	143	12.4

All technical information is subject to change without notice.

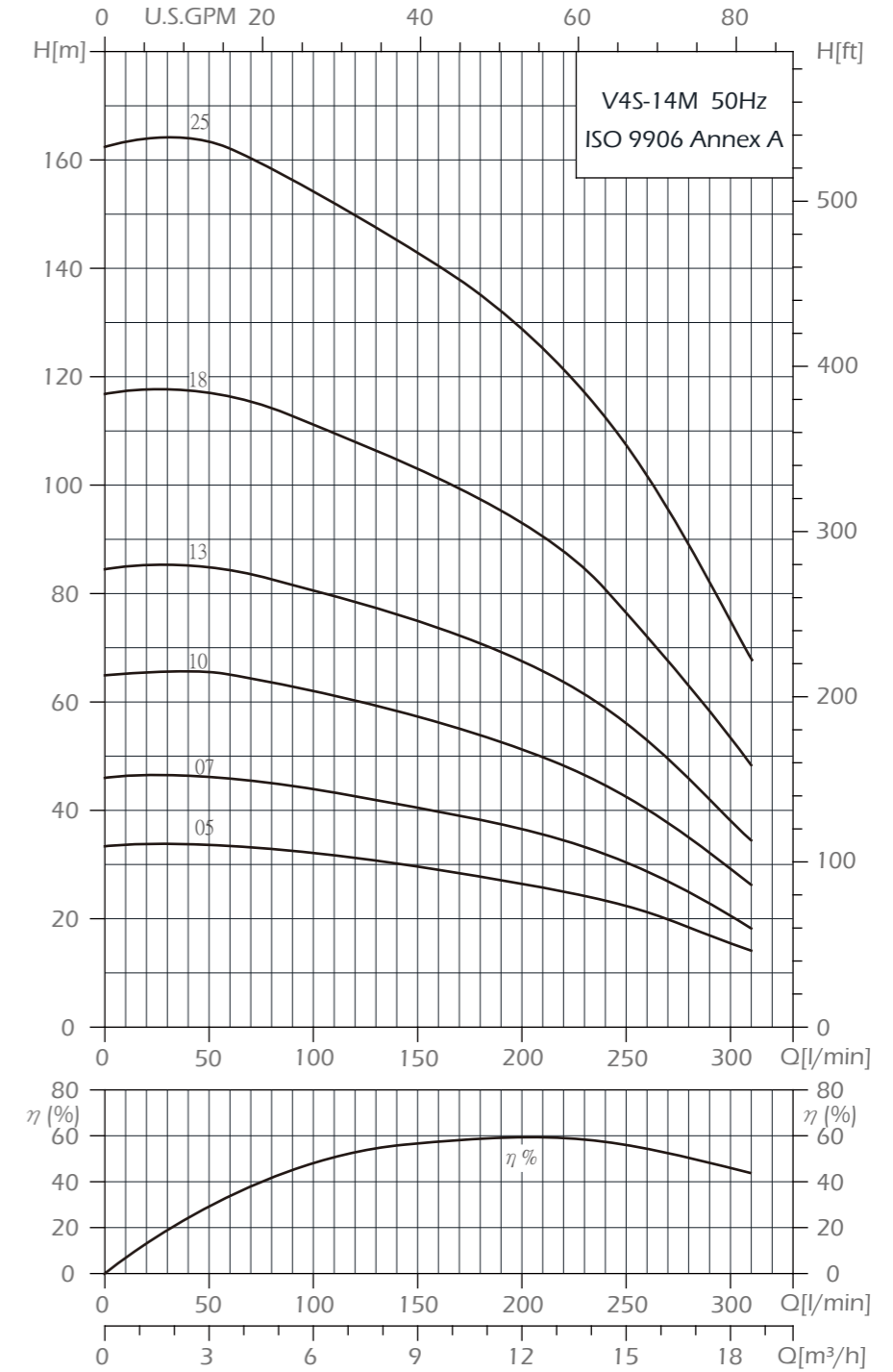
V4S-8M Performance Curves & Selection Chart



V4S-8M Selection Chart

Type	Stages	Output		L/MIN M ³ /H	TOTAL HEAD IN METERS															Weight Kg
		HP	KW		0	30	40	45	50	60	70	80	90	100	120	140	160	180		
V4S-8M05	5	1.0	0.75	30	1.8	2.4	2.7	3.0	3.6	4.2	4.8	5.4	6.0	7.2	8.4	9.6	10.8	4.3		
V4S-8M07	7	1.5	1.1	41		38	37	36	36	35	35	34	34	32	27	24	17	5.3		
V4S-8M10	10	2.0	1.5	58		54	53	52	51	49	47	47	46	43	38	32	25	6.8		
V4S-8M12	12	3.0	2.2	71		65	64	63	61	60	58	57	55	52	47	40	31	7.8		
V4S-8M15	15	3.0	2.2	87		80	79	78	76	74	72	70	68	64	57	49	38	9.3		
V4S-8M18	18	4.0	3.0	104		98	96	95	93	90	88	86	84	79	72	60	47	10.8		
V4S-8M21	21	5.5	4.0	122		114	113	111	107	105	102	100	98	93	85	72	55	12.3		
V4S-8M25	25	5.5	4.0	144		133	131	128	126	123	119	116	114	107	97	84	64	14.3		
V4S-8M30	30	7.5	5.5	174		163	160	157	154	149	145	142	139	131	120	103	79	16.8		
V4S-8M37	37	7.5	5.5	215		199	196	194	188	183	177	173	169	160	145	122	93	20.3		
V4S-8M50	50	10	7.5	288		266	263	260	254	248	242	237	230	217	198	168	129	24.7		

V4S-14M Performance Curves & Selection Chart



V4S-14M Selection Chart

Type	Stages	Output		L/MIN M ³ /H	TOTAL HEAD IN METERS															Weight Kg
		HP	KW		0	70	80	90	100	120	140	160	180	200	250	300	320			
V4S-14M05	5	2.0	1.5	33	4.2	4.8	5.4	6.0	7.2	8.4	9.6	10.8	12	15	18	19	5.0			
V4S-14M07	7	3.0	2.2	46				44	43	42	40	37	36	30	20		6.3			
V4S-14M10	10	4.0	3.0	65				62	60	58	57	54	52	43	29		8.2			
V4S-14M13	13	5.5	4.0	84				80	78	77	74	72	67	56	38		10.2			
V4S-14M18	18	7.5	5.5	117				111	108	104	102	97	93	77	54		13.4			
V4S-14M25	25	10	7.5	163				154	149	145	141	135	129	107	75		17.8			

All technical information is subject to change without notice.

EVAK V-Series 6" Stainless Steel Submersible Pumps



V6S

V6S

Evak's VS 6" SST submersible pumps are made of high quality 304 or 316 corrosion resistant Stainless Steel. The Shaft are made of high strength 431 SST. The pumps are designed for high efficiency, reliable performance, and a long life time. The pumps are light in weight and ruggedly constructed for heavy duty applications.

Pumped Liquids:
Clean, non-corrosive and non-abrasive liquids

Operating Conditions:
Max. Liquid temperature : 60 °C
Sand content: Max. 50 g/m³

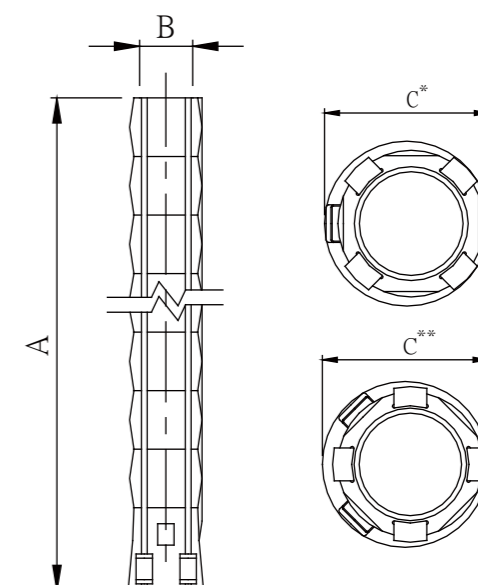
Features

- > All stainless steel design & Built-in Jam-free check valve
- > NEMA Standards Mounting Specification
- > High quality shaft bearing for low friction
- > High wear resistance SST Impeller
- > Diffuser ensuring optimal performance
- > SST Strainer prevents the Entry of Sand

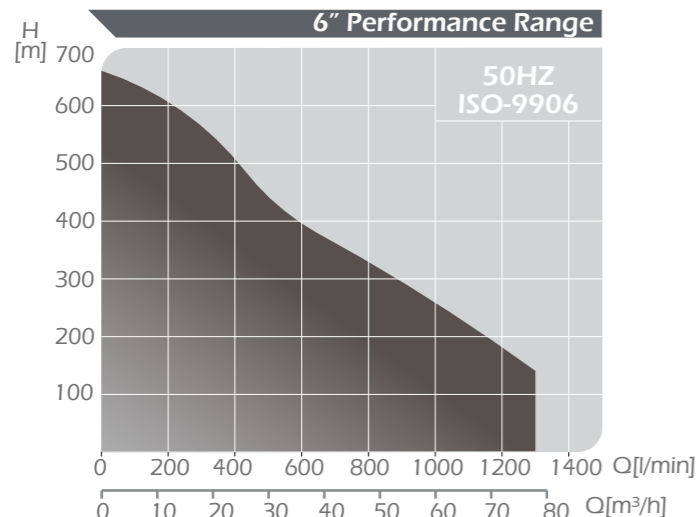
Applications

- > Potable water supply from deep wells
- > Agricultural-Irrigation, livestock watering,
- > Municipal and Industrial, Pressure boosting
- > Mine de-watering, Fountains, etc.

V6S Dimensions



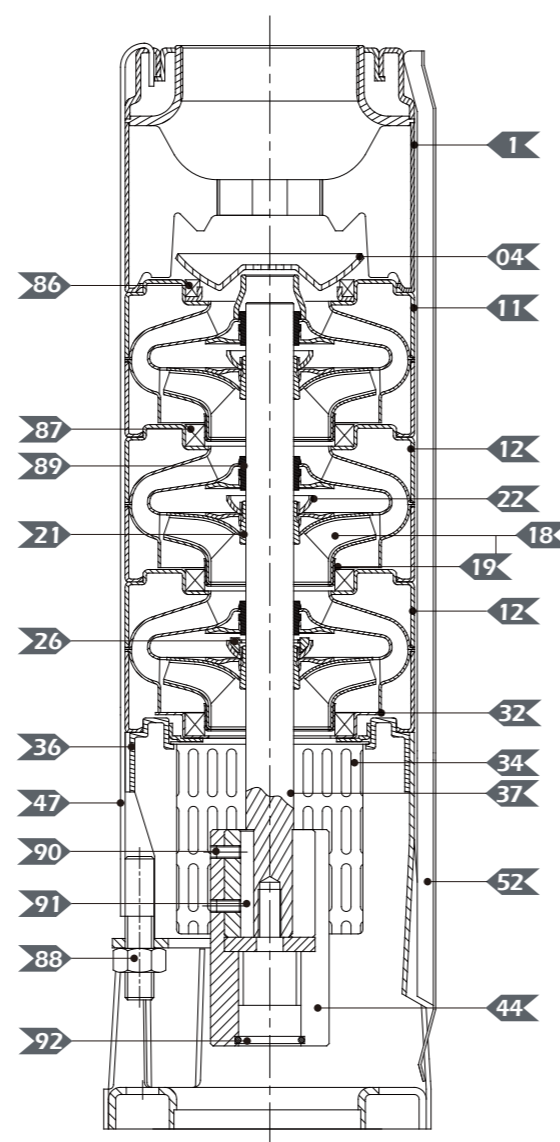
Unit(mm)



6" Performance Range

50HZ
ISO-9906

Example V6S-17M



Parts and Material List			
No	Part	Material	Standard
01	Discharge	Stainless Steel	304
04	Valve Cone	Stainless Steel	304
11	Top Diffuser	Stainless Steel	304
12	Diffuser	Stainless Steel	304
18	Impeller	Stainless Steel	304
19	Ring of Impeller	Stainless Steel	304
21	Split Cone	Stainless Steel	304
22	Split Cone Nut	Stainless Steel	304
26	Spacing Washer for Stop Ring	Carbon/Graphite/PTFE	
32	Neck Ring Retainer	Stainless Steel	304
34	Strainer	Stainless Steel	304
36	Suction Interconnector	Stainless Steel	304
37	Pump Shaft	Stainless Steel	431
44	Coupling	Stainless Steel	304
47	Strap	Stainless Steel	304
52	Cable Guard	Stainless Steel	304
86	Valve Seat	SUS304+NBR	
87	Neck Ring	SUS304+NBR	
88	Nut	Stainless Steel	304
89	Bearing	NBR	
90	Screw	Stainless Steel	304
91	Key	Stainless Steel	304
92	O - Ring	NBR	

All technical information is subject to change without notice.

V6S-17M Dimensions and Weight

Type	A	B	C*	C**	Net Weight(kg)	
V6S-17M01	343	RP 2 1/2"	131		5	
V6S-17M02	403		131		6.4	
V6S-17M04	524		131		9.3	
V6S-17M05	585		131		10.8	
V6S-17M06	645		131		12.2	
V6S-17M07	706		131		13.7	
V6S-17M08						
V6S-17M10	887		131			18
V6S-17M13	1069	142	142		22.4	
V6S-17M17	1311	142	142		28.2	
V6S-17M20	1492	142	142		32.5	
V6S-17M22	1613	142	142		35.4	
V6S-17M24	1734	142	142		38.3	
V6S-17M27	1916	142	142		42.7	
V6S-17M29	2037	142	142		45.6	
V6S-17M31	2158	142	142		48.5	
V6S-17M33	2279	142	142		51.4	
V6S-17M36	2460	142	142		55.7	
V6S-17M38	2581	142	142		58.6	
V6S-17M40	2702	142	142		61.5	

V6S-30M Dimensions and Weight

Type	A	B	C*	C**	Net Weight(kg)	
V6S-30M02	462	RP 3"	131		8.4	
V6S-30M03	558		131		10.1	
V6S-30M04	654		131		11.8	
V6S-30M06	846		131		15.2	
V6S-30M08	1038		142	142		18.6
V6S-30M11	1326		142	142		23.6
V6S-30M13	1518		142	142		27
V6S-30M15	1710		142	142		30.4
V6S-30M17	1902	142	142		33.8	
V6S-30M19	2094	142	142		37.2	
V6S-30M21	2286	142	142		40.6	
V6S-30M24	2574	142	142		45.6	
V6S-30M26	2766	142	142		49	
V6S-30M29	3054	142	142		54.1	
V6S-30M32	3342	142	142		59.2	
V6S-30M35	3630	142	142		64.3	

V6S-46M Dimensions and Weight

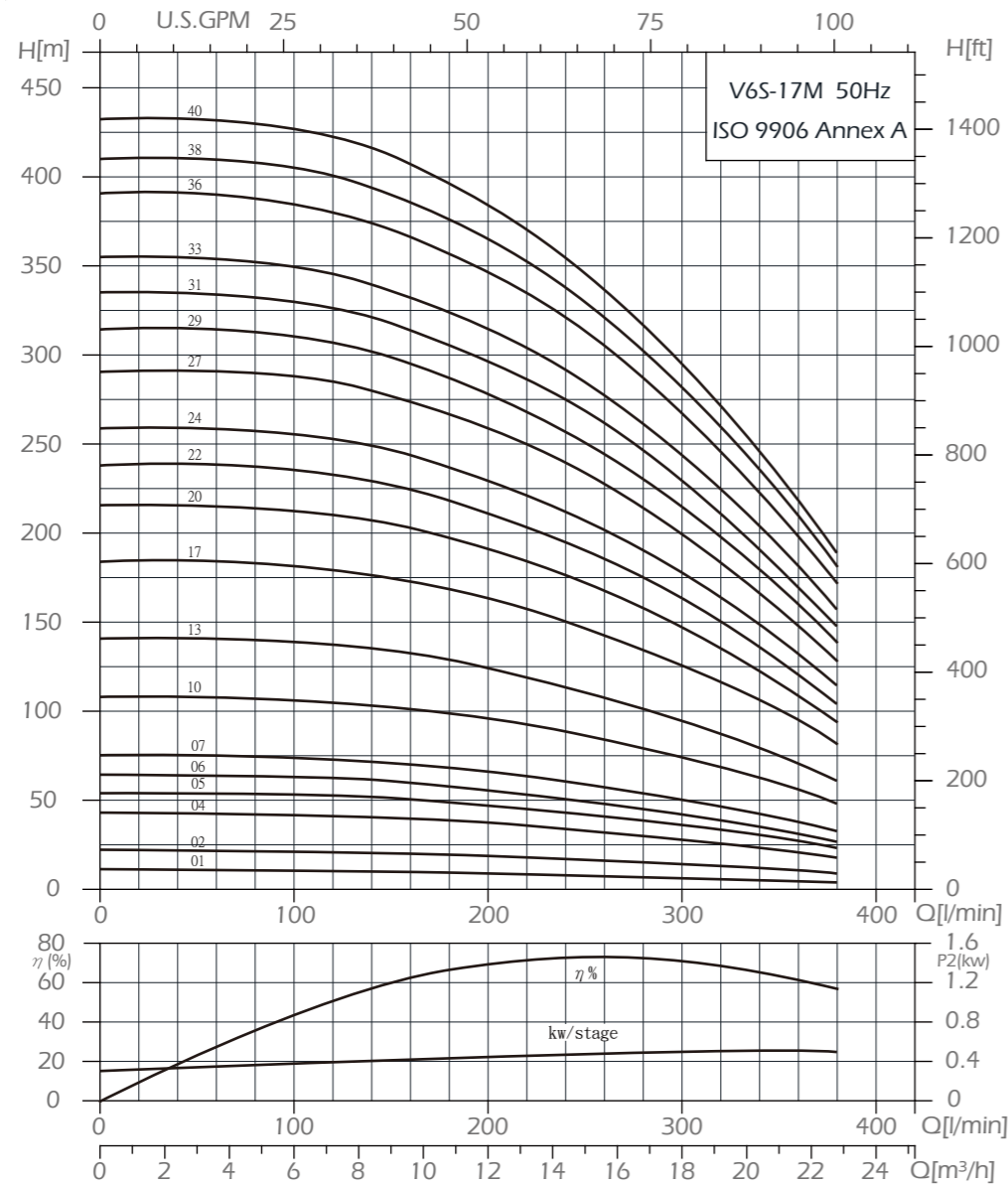
Type	A	B	C*	C**	Net Weight(kg)	
V6S-46M02	496	RP 3"	146		9.2	
V6S-46M03-C	609		146		11.5	
V6S-46M03	609		146		11.5	
V6S-46M04-C	722		146		13.8	
V6S-46M05	835		149	152		16
V6S-46M07	1061		149	152		20.6
V6S-46M08-C	1174		149	152		22.9
V6S-46M10	1400		149	152		27.4
V6S-46M12	1626	149	152		32	
V6S-46M15	1965	149	152		38.8	
V6S-46M17	2191	149	152		43.4	
V6S-46M19	2417	149	152		47.9	
V6S-46M22	2756	149	152		54.8	
V6S-46M24	2982	149	152		59.3	

V6S-60M Dimensions and Weight

Type	A	B	C*	C**	Net Weight(kg)	
V6S-60M01	383	RP 3" or 4"	146		6.9	
V6S-60M02	496		146		9.2	
V6S-60M03	609		149		11.5	
V6S-60M04	722		149	152		13.7
V6S-60M05	835		149	152		16
V6S-60M06	948		149	152		18.3
V6S-60M07	1061		149	152		20.6
V6S-60M08	1174		149	152		22.9
V6S-60M09	1287	149	152		25.1	
V6S-60M10	1400	149	152		27.4	
V6S-60M11	1513	149	152		29.7	
V6S-60M12	1626	149	152		32	
V6S-60M13	1739	149	152		34.3	
V6S-60M14	1852	149	152		36.5	
V6S-60M15	1965	149	152		38.8	
V6S-60M16	2078	149	152		41.1	
V6S-60M17	2191	149	152		43.4	
V6S-60M18	2304	149	152		45.7	
V6S-60M20	2530	149	152		50.2	

C* = Maximum diameter of pump with one motor cable
C** = Maximum diameter of pump with two motor cable

V6S-17M Performance Curves & Selection Chart

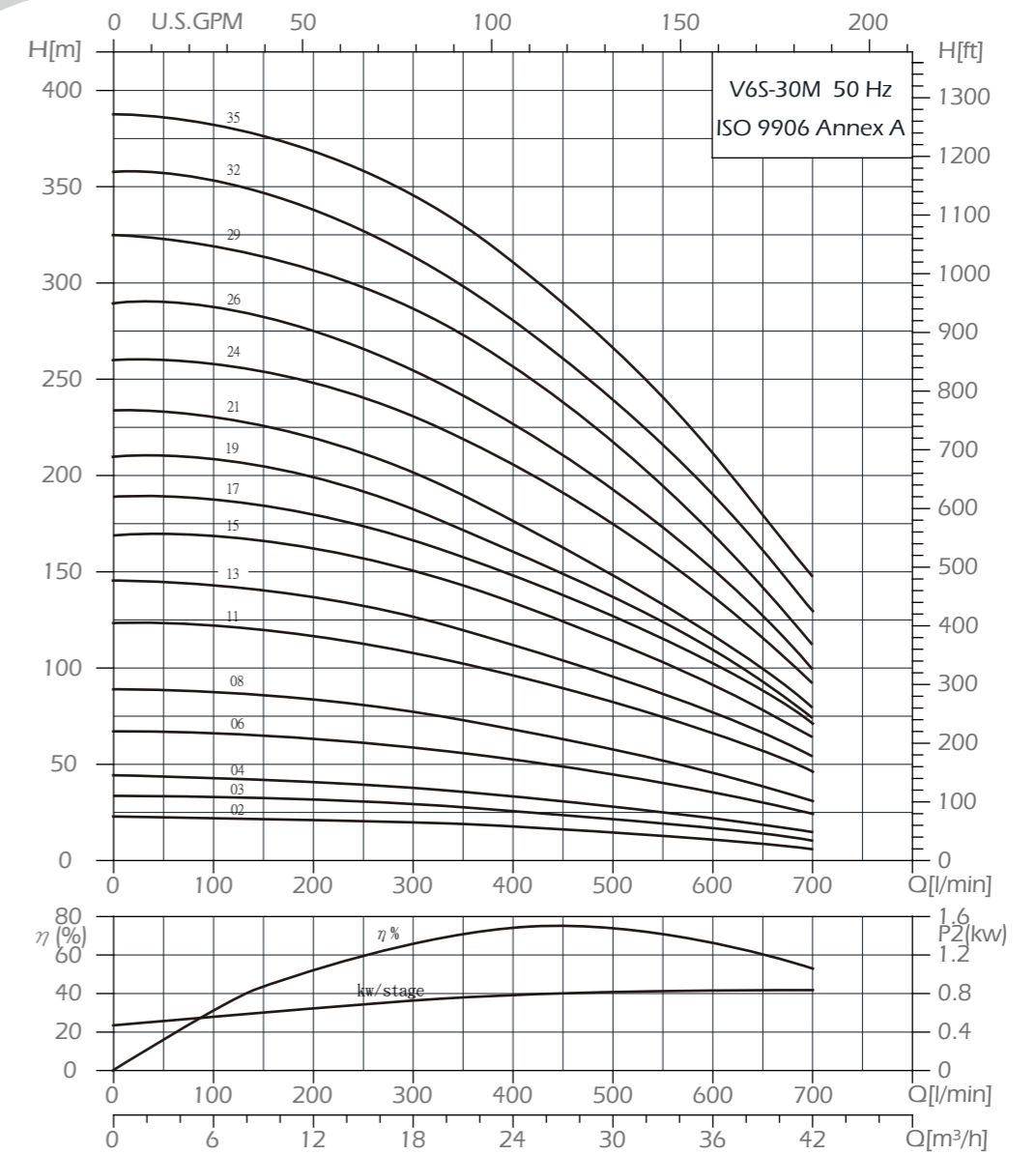


V6S-17M Selection Chart

Type	Stages	Motor		MAX.current		L/MIN	50	100	150	200	250	300	350	383	Weight
		HP	P2 kW	Amp 220V	Amp 380V										
V6S-17M01	1	0.75	0.55	2.6	1.5		11.5	11	10.5	9.5	8	7	6	4	5
V6S-17M02	2	1.5	1.1	5.2	3.0		22	21.5	20	19	17.5	14	12	9	6.4
V6S-17M04	4	3	2.2	9.5	5.5		42.5	42	40	38	33	28.5	23	18	9.3
V6S-17M05	5	4	3	13.3	7.7		53	52	50.5	47.5	42.5	37	28.5	22	10.8
V6S-17M06	6	5	3.7	15.4	8.9		64	63	60	56	50	43	34	27	12.2
V6S-17M07	7	5.5	4	17	10.4		75	74	70	66	59	50.5	40	32	13.7
V6S-17M10	10	7.5	5.5	22.2	12.8		108	107	102	95	86	74	58	48	18
V6S-17M13	13	10	7.5	28.5	16.5		141	139	133	124	112	95	75	60	22.4
V6S-17M17	17	12.5	9.3	36	20.9		184	182	175	163	147	126	100	80	28.2
V6S-17M20	20	15	11	41.8	24.2		216	213	206	192	173	147	116	95	32.5
V6S-17M22	22	17.5	13	50	29		239	237	228	212	190	163	129	105	35.4
V6S-17M24	24	17.5	13	50	29		260	257	247	230	208	178	140	115	38.3
V6S-17M27	27	20	15	55	32		291	288	277	259	234	200	158	128	42.7
V6S-17M29	29	25	18.5	69	40		314	311	300	279	250	215	170	138	45.6
V6S-17M31	31	25	18.5	69	40		335	330	318	298	269	230	181	148	48.5
V6S-17M33	33	25	18.5	69	40		355	350	337	315	285	243	191	157	51.4
V6S-17M36	36	30	22	81	47		390	385	371	348	313	268	210	170	55.7
V6S-17M38	38	30	22	81	47		410	405	390	365	330	281	222	180	58.6
V6S-17M40	40	30	22	81	47		433	428	412	384	346	296	235	190	61.5

V6S-17M08 ; V6S-17M12 ; V6S-17M43 are available on request.

V6S-30M Performance Curves & Selection Chart

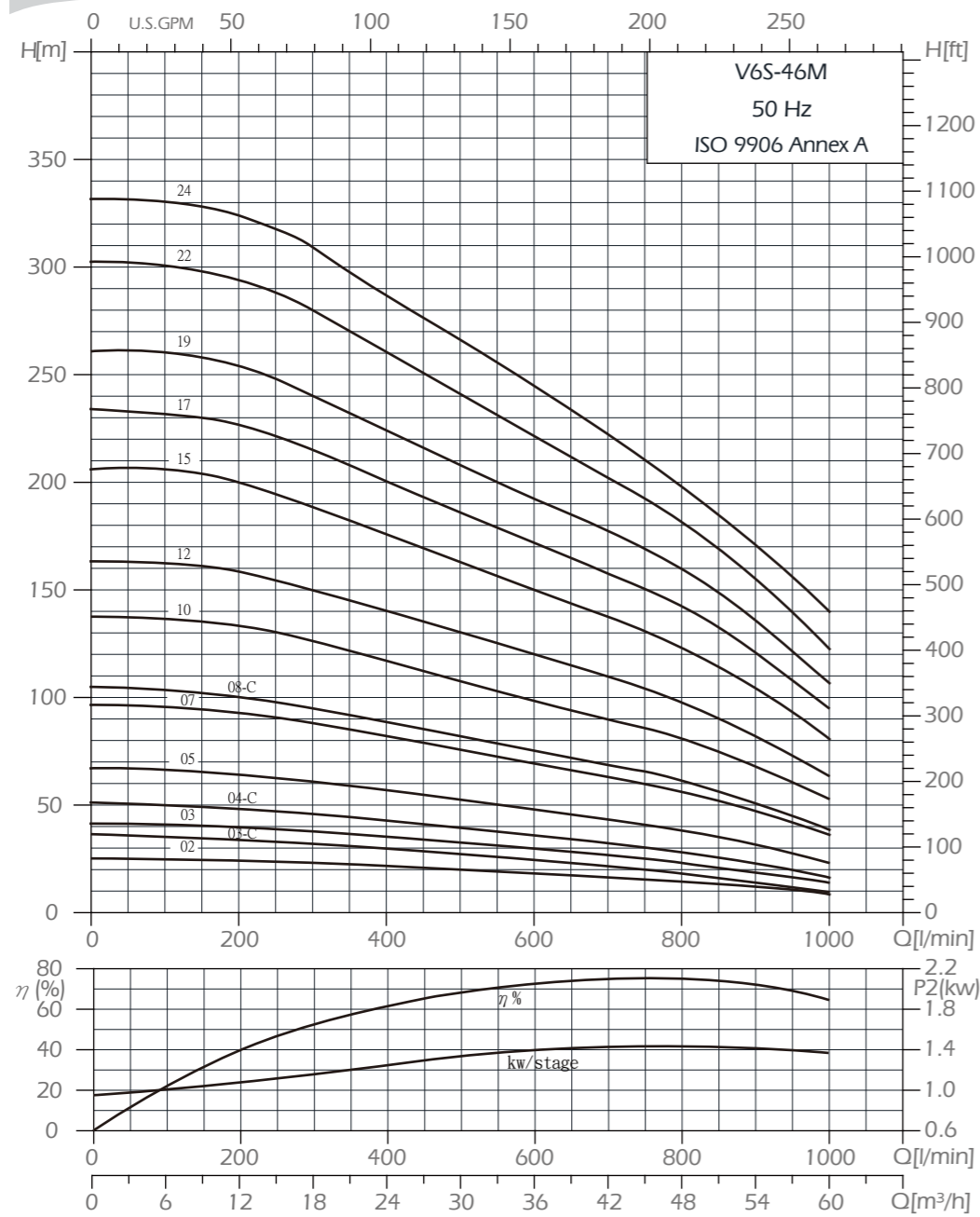


V6S-30M Selection Chart

Type	Stages	Motor		MAX.current		L/MIN	100	150	200	250	300	350	400	450	500	550	600	650	700	Weight
		HP	P2 kW	Amp 220V	Amp 380V															
V6S-30M02	2	3	2.2	9.5	5.5		23	22	21	20	19	18	17	16	15	13	11	9	6	8.4
V6S-30M03	3	4	3	13.3	7.7		33	32	31	30	29	28	26	24	22	20	17	14	11	10.1
V6S-30M04	4	5	3.7	15.4	8.9		43	42	41	40	38	36	34	31	28	26	23	19	15	11.8
V6S-30M06	6	7.5	5.5	22.2	12.8		67	64	62	60	58	56	52	49	45	40	36	30	25	15.2
V6S-30M08	8	10	7.5	28.5	16.5		88	87	84	81	78	73	68	64	58	53	46	38	31	18.6
V6S-30M11	11	15	11	41.8	24.2		122	120	117	112	108	102	97	90	83	76	67	57	47	23.6
V6S-30M13	13	15	11	41.8	24.2		143	140	137	132	127	120	113	105	97	87	77	66	55	27
V6S-30M15	15	20	15	55	32		168	166	162	157	150	142	134	124	113	102	90	77	65	30.4
V6S-30M17	17	20	15	55	32		188	185	180	173	167	158	148	138	127	116	103	88	71	33.8
V6S-30M19	19	25	18.5	69	40		208	205	199	192	182	172	161	150	137	125	110	94	77	37.2
V6S-30M21	21	25	18.5	69	40		230	226	220	212	202	190	177	164	149	134	117	100	80	40.6
V6S-30M24	24	30	22	81	47		258	254	248	240	230	219	207	191	175	156	137	117	93	45.6
V6S-30M26	26	30	22	81	47		287	282	275	266	255	242	227	212	194	173	152	127	100	49
V6S-30M29	29	35	26	96	56		319	314	307	298	287	273	257	240	220	196	170	143	113	54.1
V6S-30M32	32	40	30	111	64		353	347	338	327	313	298	281	261	240	217	190	160	130	59.2
V6S-30M35	35	40	30	111	64		382	377	368	358	346	329	311	290	267	240	211	180	148	64.3

All technical information is subject to change without notice.

V6S-46M Performance Curves & Selection Chart

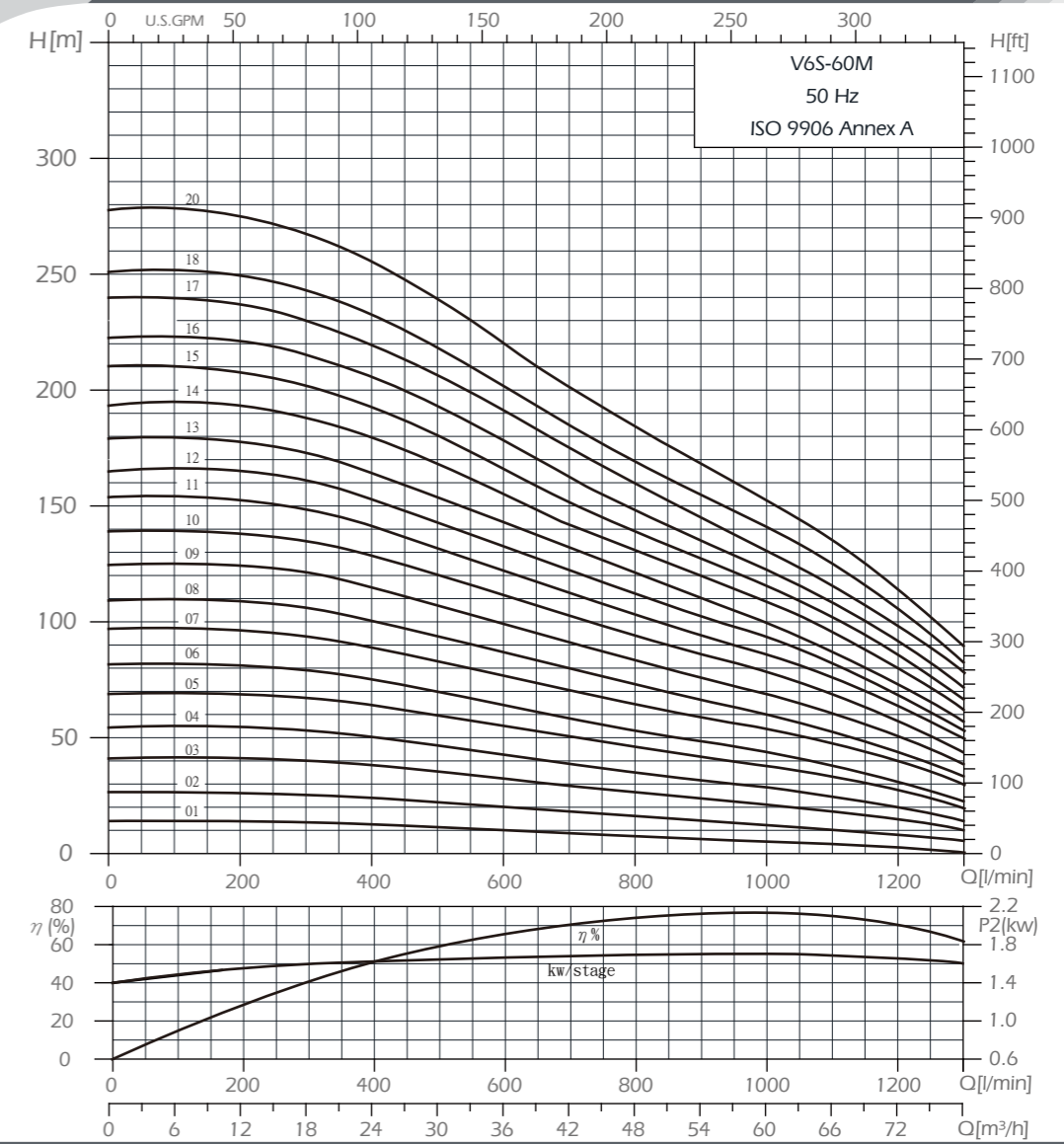


V6S-46M Selection Chart

Type	Stages	Motor HP kW	MAX.current Amp 380V	L/MIN M³/H	200	250	300	350	400	450	500	600	700	800	900	1000	Weight kg
V6S-46M02	2	4 3	13.3 7.7		12	15	18	21	24	27	30	36	42	48	54	60	9.2
V6S-46M03-C	3	5 3.7	15.4 8.9		24	23.5	23	22.5	22	21	20	18	17	15	12	9	11.5
V6S-46M03	3	7.5 5.5	22.2 12.8		40	39	38	37	35	34	33	29	27	23	18	14	11.5
V6S-46M04-C	4	7.5 5.5	22.2 12.8		49	47	46	45	43	41	39	36	32	28	23	17	13.8
V6S-46M05	5	10 7.5	28.5 16.5		65	63	61	59	57	55	53	48	44	39	32	24	16
V6S-46M07	7	15 11	41.8 24.2		94	92	88	85	82	79	76	70	64	57	47	37	20.6
V6S-46M08-C	8	15 11	41.8 24.2		100	98	95	92	88	85	82	76	69	61	51	39	22.9
V6S-46M10	10	20 15	55 32		133	130	127	122	117	112	107	98	90	80	67	53	27.4
V6S-46M12	12	25 18.5	69 40		158	155	150	145	140	135	130	120	110	98	83	64	32
V6S-46M15	15	30 22	81 47		200	195	189	183	176	169	163	150	138	124	103	81	38.8
V6S-46M17	17	35 26	96 56		227	222	215	208	200	193	186	172	158	143	121	96	43.4
V6S-46M19	19	40 30	111 64		254	248	241	233	224	216	208	193	178	160	136	107	47.9
V6S-46M22	22	50 37	138 80		294	288	280	270	260	251	241	222	203	183	155	123	54.8
V6S-46M24	24	50 37	138 80		325	317	309	298	287	276	265	244	223	199	171	140	59.3

All technical information is subject to change without notice.

V6S-60M Performance Curves & Selection Chart



V6S-60M Selection Chart

Type	Stages	Motor HP kW	MAX.current Amp 380V	L/MIN M³/H	300	350	400	450	500	600	700	800	900	1000	1100	1200	1300	Weight kg
V6S-60M01	1	3 2.2	9.5 5.5		18	21	24	27	30	36	42	48	54	60	66	72	78	6.9
V6S-60M02	2	5.5 4	15.4 8.9		26	25	24	23	22	20	18	16	14	13	11	8	5	9.2
V6S-60M03	3	7.5 5.5	22.2 12.8		40	39	38	37	36	32	28	26	24	21	18	14	10	11.5
V6S-60M04	4	10 7.5	28.5 16.5		53	52	51	48	47	43	38	35	32	28	25	20	14	13.7
V6S-60M05	5	12.5 9.3	36 20.9		67	66	64	62	60	55	50	46	42	38	33	27	19	16
V6S-60M06	6	15 11	41.8 24.2		79	78	76	73	70	64	58	53	48	44	38	32	23	18.3
V6S-60M07	7	17.5 13	50 29		94	92	89	86	84	77	70	64	59	54	47	40	29	20.6
V6S-60M08	8	20 15	55 32		106	104	101	97	94	87	80	73	67	60	53	44	33	22.9
V6S-60M09	9	25 18.5	69 40		122	118	116	112	108	99	91	83	76	69	61	51	38	25.1
V6S-60M10	10	25 18.5	69 40		135	132	128	125	120	111	102	95	87	78	68	57	45	27.4
V6S-60M11	11	30 22	81 47		148	146	142	137	132	122	112	103	95	86	76	64	49	29.7
V6S-60M12	12	30 22	81 47		162	157	153	148	143	133	122	112	103	94	83	68	53	32
V6S-60M13	13	35 26	96 56		173	169	165	160	155	143	132	121	110	100	87	73	57	34.3
V6S-60M14	14	35 26	96 56		188	184	180	175	168	156	142	130	120	109	96	80	63	36.5
V6S-60M15	15	35 26	96 56		203	197	193	187	180	166	152	138	127	116	103	86	67	38.8
V6S-60M16	16	40 30	111 64		216	211	206	200	193	178	162	148	135	123	108	92	72	41.1
V6S-60M17	17	50 37	138 80		230	226	220	214	207	192	175	158	145	132	116	97	78	43.4
V6S-60M18	18	50 37	138 80		243	238	233	226	218	202	185	170	155	141	126	107	83	45.7
V6S-60M20	20	50 37	138 80		267	263	256	248	239	220	201	184	168	153	136	115	90	50